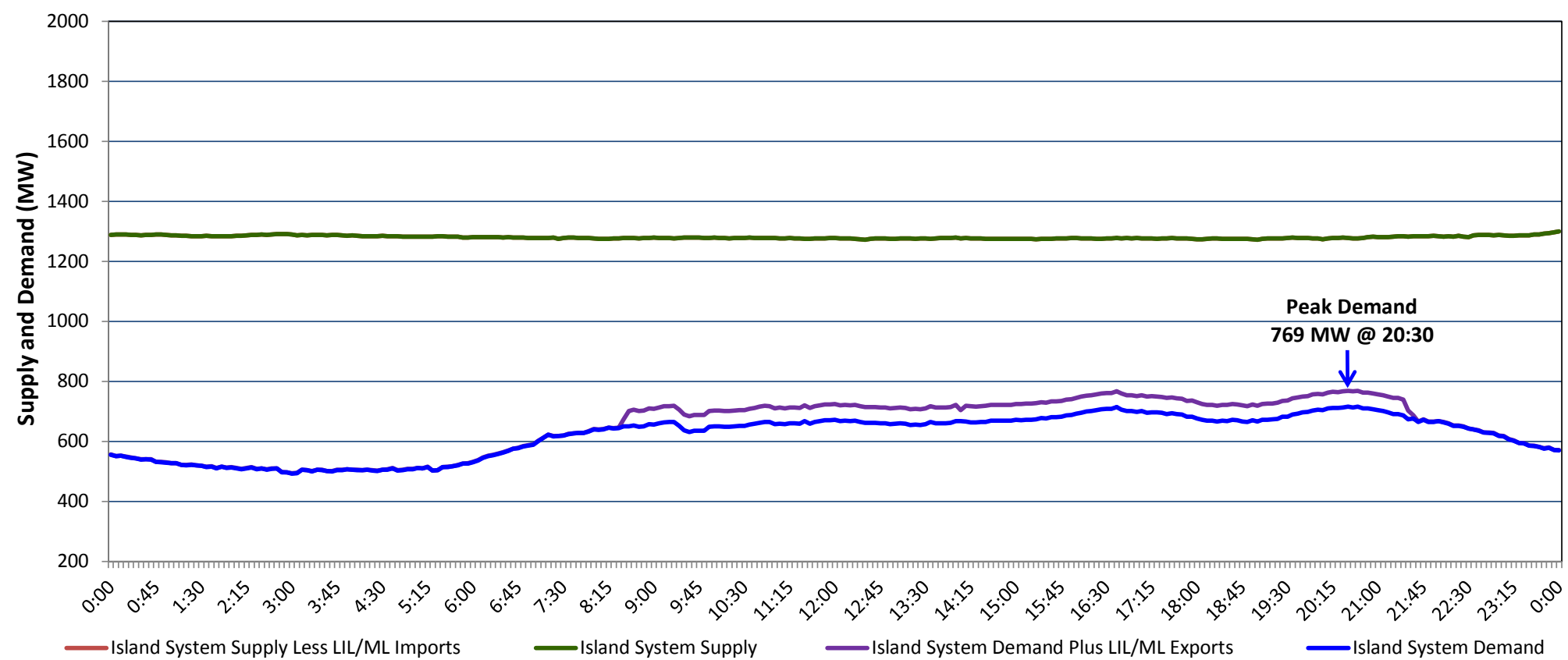


**Newfoundland Labrador Hydro (NLH)
Supply and Demand Status Report Filed Friday, September 11, 2020**

**Section 1
Island Interconnected System Supply, Demand & Exports
Actual 24 Hour System Performance For Thursday, September 10, 2020**



Supply Notes For September 10, 2020

- 1,2
- A As of 0853 hours, June 21, 2020, Holyrood Unit 3 available but not operating (150 MW).
 - B As of 0808 hours, July 15, 2020, Holyrood Unit 2 unavailable due to planned outage (170 MW).
 - C As of 1009 hours, August 23, 2020, Upper Salmon Unit unavailable due to planned outage (84 MW).
 - D As of 1811 hours, September 02, 2020, Holyrood Unit 1 available but not operating (170 MW).
 - E As of 1400 hours, September 07, 2020, Bay d'Espoir Unit 1 unavailable due to planned outage (76.5 MW).
 - F As of 1400 hours, September 07, 2020, Bay d'Espoir Unit 2 unavailable due to planned outage (76.5 MW).

**Section 2
Island Interconnected Supply and Demand**

Fri, Sep 11, 2020	Island System Outlook ³	Seven-Day Forecast	Temperature (°C)		Island System Daily Peak Demand (MW)	
			Morning	Evening	Forecast	Adjusted ⁷
Available Island System Supply: ⁵	1,295 MW	Friday, September 11, 2020	19	10	795	795
NLH Island Generation: ⁴	965 MW	Saturday, September 12, 2020	10	12	720	720
NLH Island Power Purchases: ⁶	115 MW	Sunday, September 13, 2020	10	11	730	730
Other Island Generation:	215 MW	Monday, September 14, 2020	14	16	695	695
ML/LIL Imports:	-	Tuesday, September 15, 2020	14	11	695	695
Current St. John's Temperature & Windchill:	19 °C	Wednesday, September 16, 2020	9	10	710	710
7-Day Island Peak Demand Forecast:	795 MW	Thursday, September 17, 2020	13	14	670	670

Supply Notes For September 11, 2020

- 3
- Notes:
1. Generation outages for running and corrective maintenance are included. These are not unusual for power system operations. They generally do not impact customer supply. The power system operators schedule outages to system equipment whenever possible to coincide with periods when customer demands are low and sufficient supply reserves are available. However, from time to time equipment outages are necessary and reserves may be impacted.
 2. Due to the Island system having no synchronous connections to the larger North American grid, when there is a sudden loss of large generating units there may be a requirement for some customer's load to be interrupted for short periods to bring generation output equal to customer demand. This automatic action of power system protection, referred to as under frequency load shedding (UFLS), is necessary to ensure the integrity and reliability of system equipment. Under frequency events have typically occurred 5 to 8 times per year on the Island Interconnected System and the resultant customer load interruptions are generally less than 30 minutes. With the activation of the Maritime Link frequency controller during the winter of 2018, UFLS events have occurred less frequently.
 3. As of 0800 Hours.
 4. Gross output including station service at Holyrood (24.5 MW) and improved NLH hydraulic output due to water levels (35 MW).
 5. Gross output from all Island sources (including Note 4).
 6. NLH Island Power Purchases include: CBPP Co-Gen, Nalcor Exploits, Rattle Brook, Star Lake, Wind Generation and capacity assistance (when applicable).
 7. Adjusted for curtailable load, market activities and the impact of voltage reduction when applicable.

**Section 3
Island Peak Demand Information
Previous Day Actual Peak and Current Day Forecast Peak**

Thu, Sep 10, 2020	Actual Island Peak Demand ⁸	20:30	769 MW
Fri, Sep 11, 2020	Forecast Island Peak Demand		795 MW

- Notes: 8. Island Demand / LIL / ML Exports (where applicable) is supplied by NLH generation and purchases, plus generation owned and operated by Newfoundland Power and Corner Brook Pulp & Paper (Deer Lake Power, DLP).